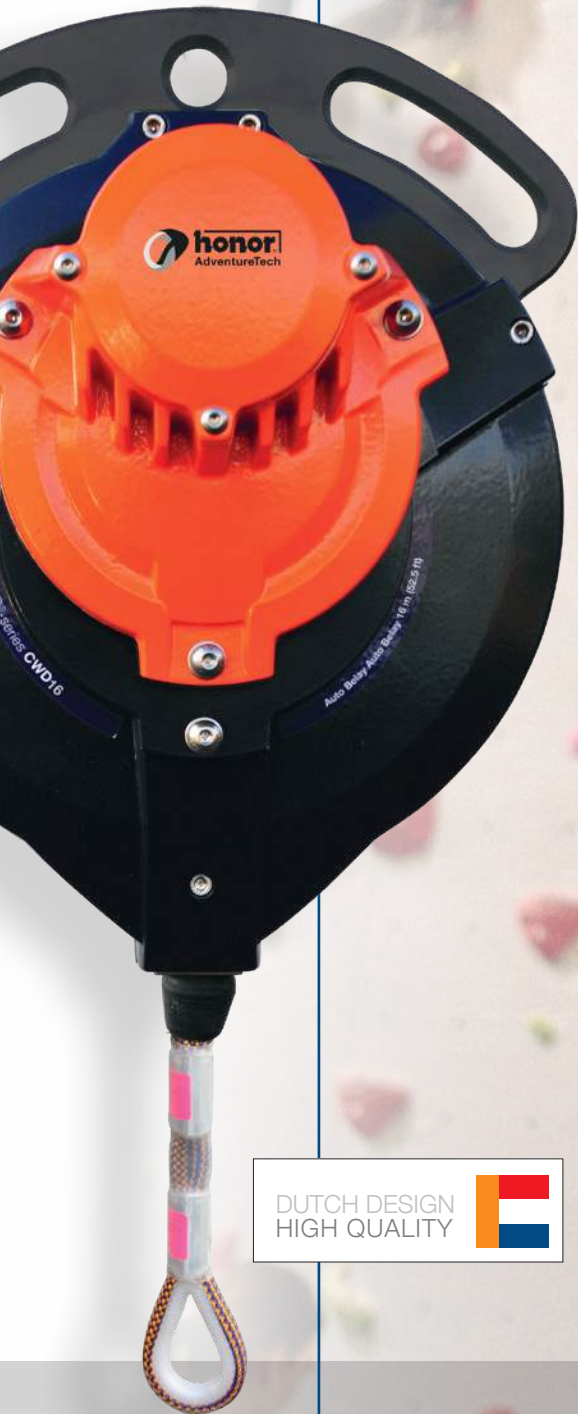
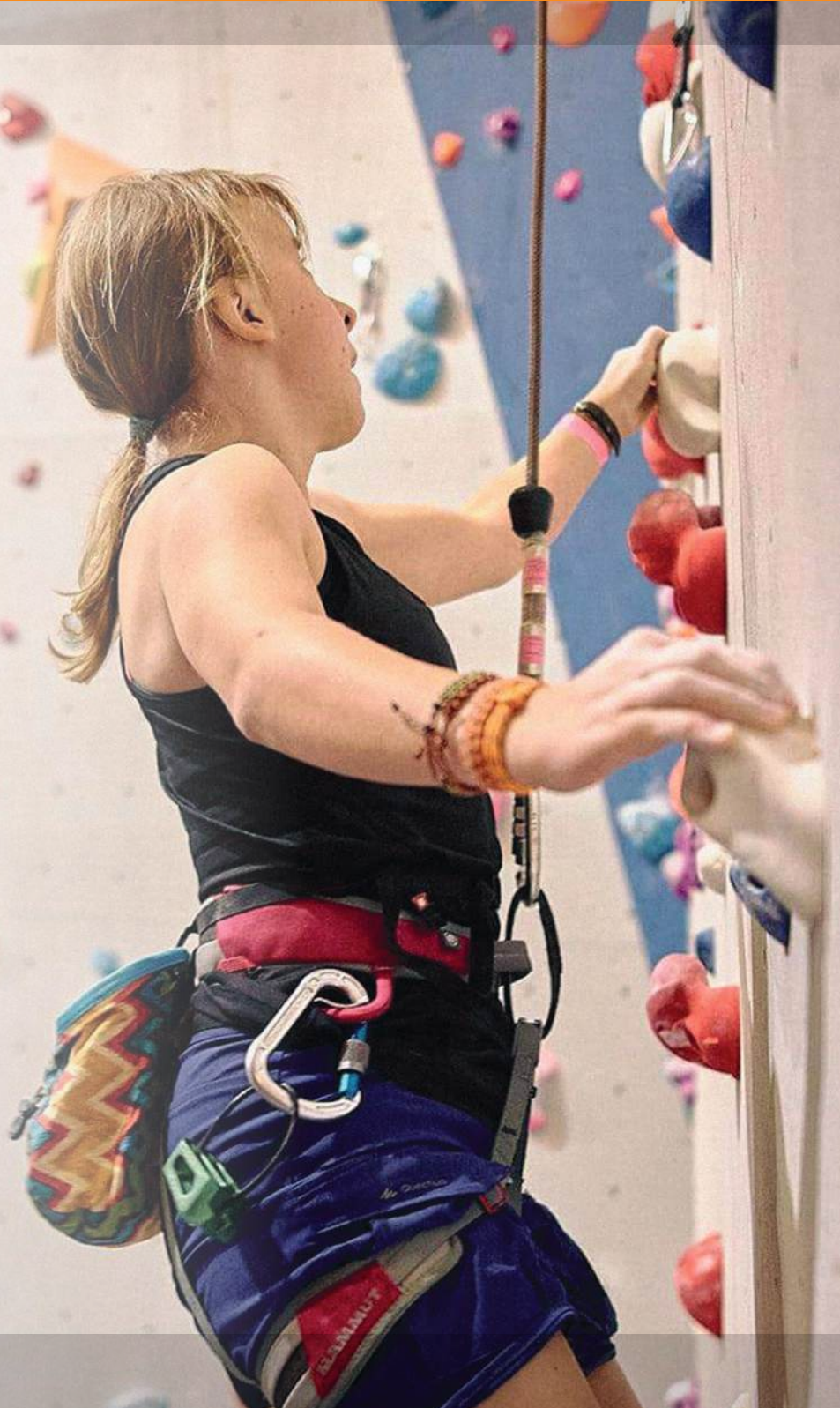


Auto Belay | STAR®-belay *Climbing Wall Descenders*



DUTCH DESIGN
HIGH QUALITY



Powering your adventure experiences!

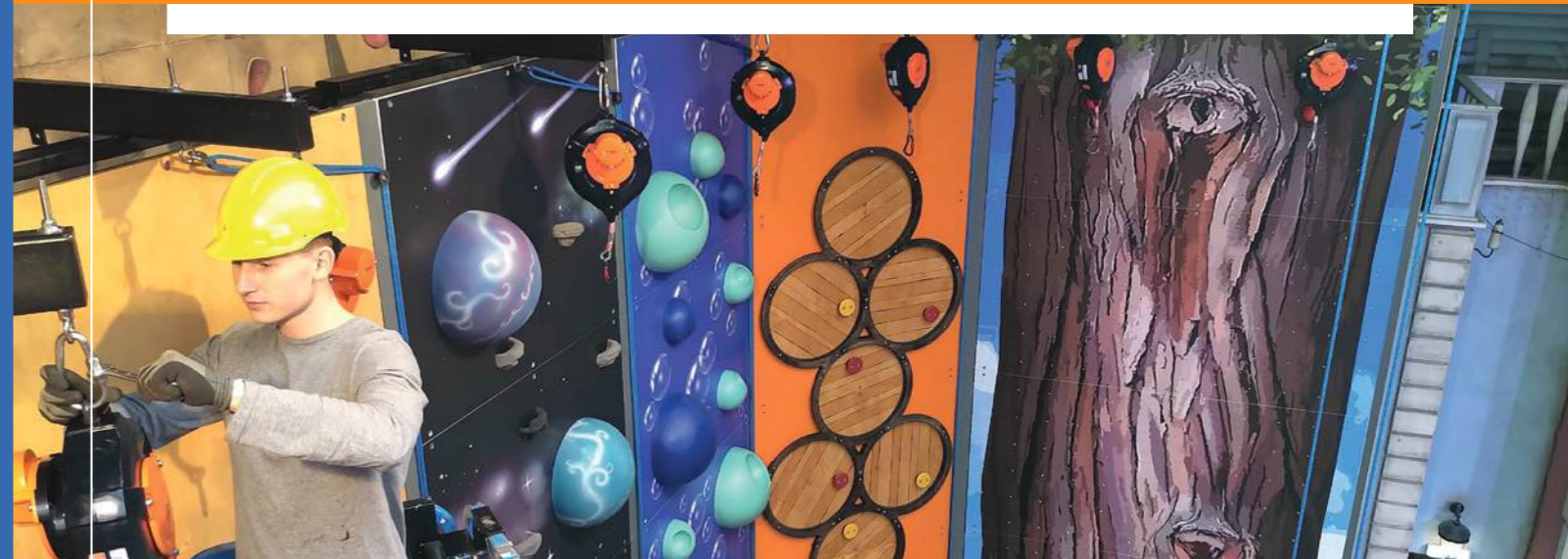
AUTO BELAY YOUR PERSONAL SAFETY

We've put over 70-years safety engineering experience in our STAR-belay types auto belay!

The STAR-belay types are a spin-off of a wide range of 20 different safety devices developed by our sister company HONOR Safety & Consultancy B.V. comprising fall arrest blocks, recovery devices, automatic descenders, evacuation and rescue devices, load arrestors, etc. The STAR-belay auto belay devices are specially designed for climbers and in use in climbing gyms, ropes courses and zip line tours all over the world.

Auto belays contribute to the safety of climbers while enjoying the freedom and fun of their sport or hobby. Whether seriously training, staying in shape or experiencing to climb up or descend a very first time you're free to go on any facility in a safe way. STAR-belay facilitate individual climbers up to large groups while costs are lowered.

HONOR's modular STAR-series range of safety devices also comprises 3 types of auto belay: CWD9, CWD16 and 1 speed-version; the CWD20 SPEED.



HONOR AdventureTech *Powering your adventure experiences*

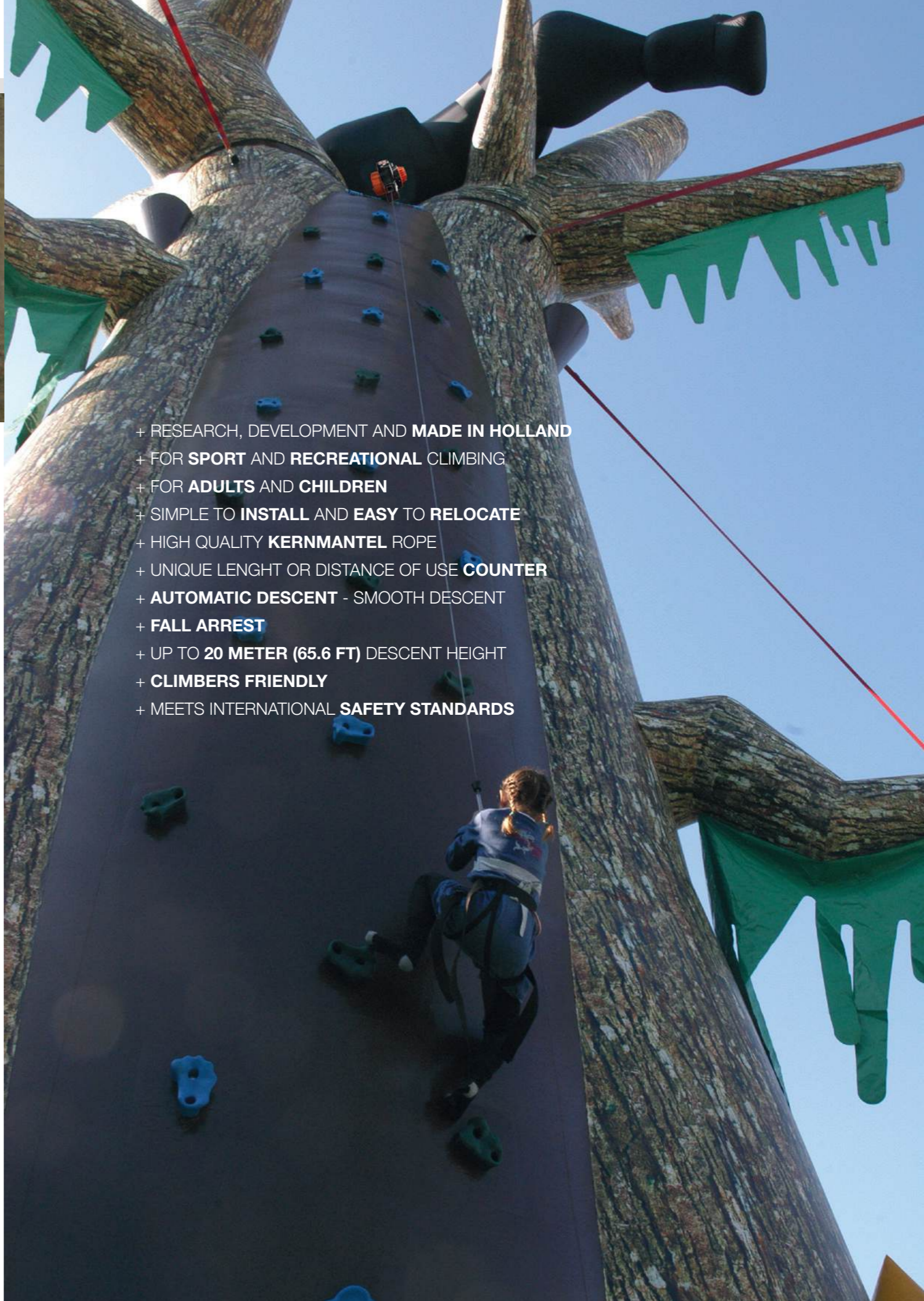
HONOR AdventureTech is situated in the Netherlands. We design and manufacture premium Auto Belay (climbing wall descenders) for sport climbers and leisure activities under the brand name STAR-belay. Under the brand ZIP-brake we also manufacture devices to comfortable slow down people at the end of zip lines. Our accessories complete the range.

As far back as 1948 we started developing and manufacturing safety products in-house, in response to safety issues affecting our clients. Our sister company HONOR Safety & Consultancy – an international orientated Dutch company – experienced in developing and manufacturing premium height safety, evacuation and rescue solutions in partnership with its clients. From this starting point we also developed climbing auto belay devices and zip brakes.

HONOR AdventureTech is located in Almere (close to Amsterdam), the Netherlands. Working together with industrial designers, end-user customers and export distributors many HONOR-solutions are internationally patented, often nominated and even won the international prestigious Dutch Design Award! Our products are MADE IN HOLLAND, genuine and virgin materials used, sustainable produced under the right working conditions!

HONOR is certified in accordance to ISO 9001:2015 and in conformance to PPE Regulation (EU) 2016/425 Module C2 (Annex IV) and SCC ('SCC' is the abbreviation for SHE Checklist Contractors and is managed by the Foundation Cooperation for Safety {SSW}).

Enjoy your Safety high-up!

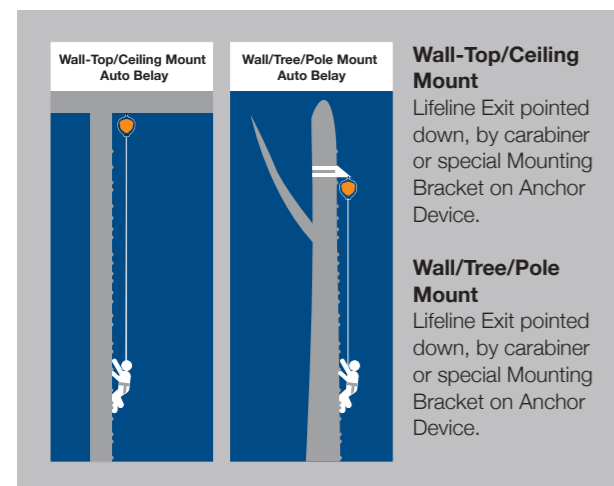


STAR-belay devices approved fall arrest device and safe descender

The main hazard while climbing is falling! So, based on risk analysis, every climber - in a climbing gym or high ropes course etc - has to use approved fall arrest equipment and of course gear to descent safely after reaching the top or a fall while climbing. That's why the STAR-belay CWD-type devices are approved according:

- **European PPE Regulation 2016/425**
- **EN 360:2002:** Retractable type fall arrestors - Personal protective equipment against falls from a height
- **EN 341:2011/1A:** Automatic descender devices for rescue Class-A (highest classification) - Personal fall protection equipment

(HONOR AdventureTech joined CEN/TC 136/WG 5 "Mountaineering and climbing equipment" PG8 Autobelay Devices as an active member working on the development of the first international auto belay standard)

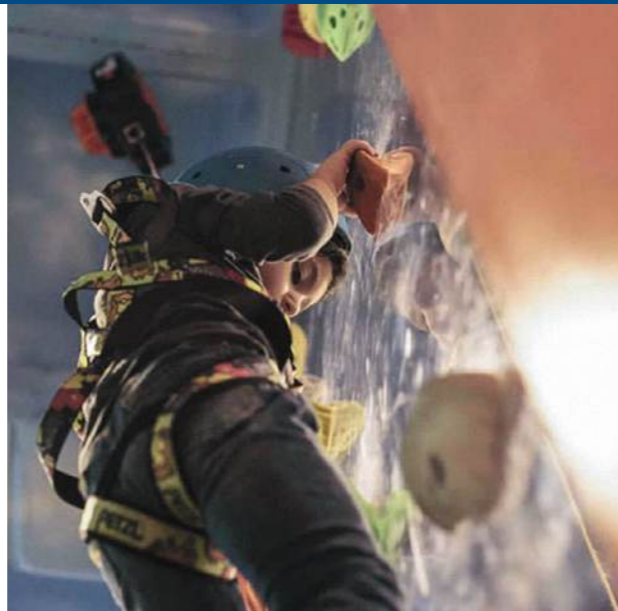


- + RESEARCH, DEVELOPMENT AND **MADE IN HOLLAND**
- + FOR **SPORT AND RECREATIONAL** CLIMBING
- + FOR **ADULTS AND CHILDREN**
- + SIMPLE TO **INSTALL** AND **EASY TO RELOCATE**
- + HIGH QUALITY **KERNMANTEL** ROPE
- + UNIQUE LENGTH OR DISTANCE OF USE **COUNTER**
- + **AUTOMATIC DESCENT** - SMOOTH DESCENT
- + **FALL ARREST**
- + UP TO **20 METER (65.6 FT)** DESCENT HEIGHT
- + **CLIMBERS FRIENDLY**
- + MEETS INTERNATIONAL **SAFETY STANDARDS**

STAR®-belay type CWD9

Auto Belay Kernmantel rope

Climbing wall descender up to 9 meter (29.5 ft) descent height, integrated descent module and counter. Cost effective auto belay especially developed for fun and kids climbing walls.



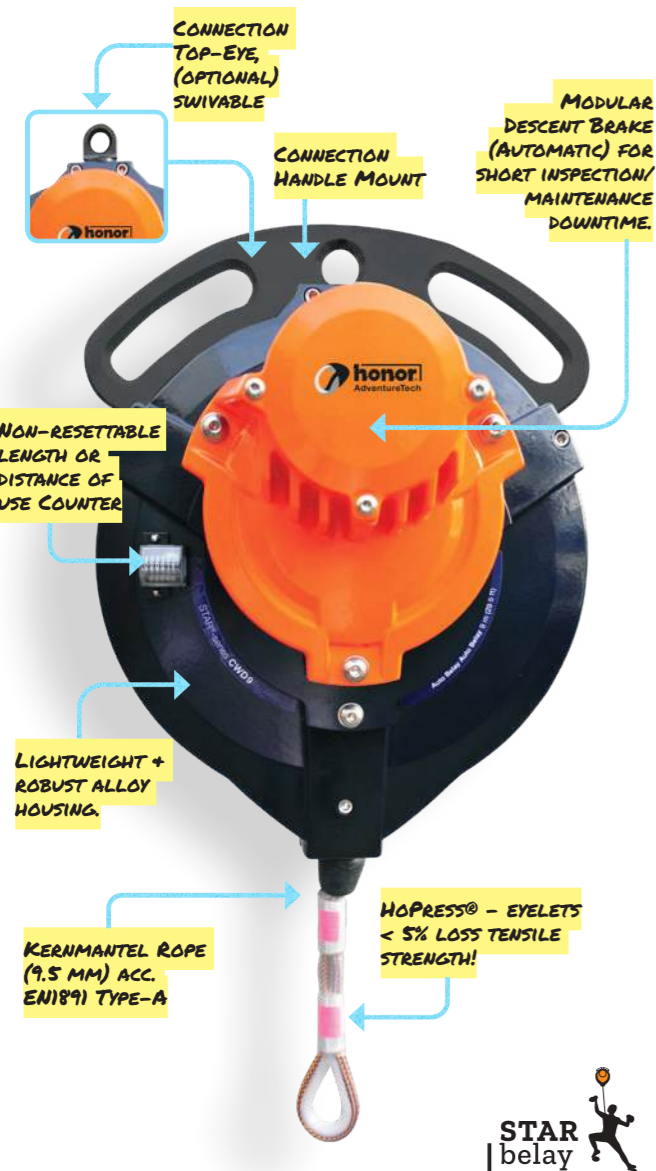
Specifications CWD9:

- Low testing and inspection costs;
- Descent height: max. 9 m (29.5 ft);
- Capacity: max. climber weight 150 kg (331 lbs);
- Lifeline:
 - Kernmantel rope: 9.5 mm – EN 1891 Type A;
 - Static strenght with HoPress® eyelet >22 kN;
 - Self retracting;
- Modular descent brake,
 - Automatic;
 - Descent speed approx. 1.0 m/s (max. 2.0 m/s to EN341)
 - Always activated descent brake, no free fall distance;
 - Very low fall arrest forces onto body;
- Integrated length/distance of use counter, non-resettable;
- Applied materials:
 - Housing & modules: lightweight, Marine-Grade alloys – powder coated;
 - Internal components: SS, Marine-Grade alloys;
- Operating Temperature: min. -10 °C – max. 55 °C
min. 14° F – max. 131° F
- Device Weight: 16.0 kg (35.3 lbs);
- Mounts:
 - Handle Mount (2x handle & 1x connecting eye);
 - Top-Eye (swivable);

Patents and standards:

European patent number: 002503698-001
 USA patent number: 23-0825-0576900
 European standards: EN 360:2002, EN 341:2011/1A
 US standard: ANSI / ASSE Z359.4-2007 pending;

Art.no: R013.015.100 – CWD9 (Handle Mount)
 Art.no: R013.015.000 – CWD9 (Top-Eye)



STAR®-belay type CWD16

Auto Belay Kernmantel rope

Auto descending belay, maximum 16 meter (52.5 ft) descent height, integrated descent module and counter. The perfect auto belay for sport and recreational climbing.



Specifications CWD16:

- Low testing and inspection costs;
- Descent height: max. 16 m (52.5 ft);
- Capacity: max. climber weight 150 kg (331 lbs);
- Lifeline:
 - Kernmantel rope: 9.5 mm – EN 1891 Type A;
 - Static strenght with HoPress® eyelet >22 kN;
 - Self retracting;
- Modular descent brake,
 - Automatic;
 - Descent speed approx. 1.0 m/s (max. 2.0 m/s to EN341)
 - Always activated descent brake, no free fall distance;
 - Very low fall arrest forces onto body;
- Integrated length/distance of use counter, non-resettable;
- Applied materials:
 - Housing & modules: lightweight, Marine-Grade alloys – powder coated;
 - Internal components: SS, Marine-Grade alloys;
- Operating Temperature: min. -4 °C – max. 55 °C
min. 24.8° F – max. 130° F
- Device Weight: 17.7 kg (39 lbs);
- Mounts:
 - Handle Mount (2x handle & 1x connecting eye);
 - Top-Eye (swivable);

Patents and standards:

European patent number: 002503698-001
 USA patent number: 23-0825-0576900
 European standards: EN 360:2002, EN 341:2011/1A
 US standard: ANSI / ASSE Z359.4-2007 pending;

Art.no: R013.022.100 – CWD16 (Handle Mount)
 Art.no: R013.022.000 – CWD16 (Top-Eye)



STAR®-belay type CWD20 SPEED



STAR®-BELAY TYPE CWD20 SPEED

+ THE FASTEST RETRACTING (OLYMPIC) SPORT CLIMBING AUTO BELAY!



SPEED Belay Kernmantel rope

SPEED auto belay for routes up to 20 meter (65.6 ft) descent height, integrated descent module and counter. The fastest retracting (Olympic) sport climbing auto belay!



Specifications CWD20 SPEED:

- Retraction speed: approx. 5.0 m/s (16.4 ft/s);
- Low testing and inspection costs;
- Descent height: max. 20 m (65.6 ft);
- Capacity: max. climber weight 150 kg (331 lbs);
- Lifeline:
 - Kernmantel rope: 9.5 mm – EN 1891 Type A;
 - Static strength with HoPress® eyelet >22 kN;
 - Self retracting;
- Modular descent brake,
 - Automatic;
 - Descent speed approx. 1.0 m/s (max. 2.0 m/s to EN341)
 - Always activated descent brake, no free fall distance;
 - Very low fall arrest forces onto body;
- Integrated length/distance of use counter, non-resettable;
- Applied materials:
 - Housing & modules: lightweight, Marine-Grade alloys – powder coated;
 - Internal components: SS, Marine-Grade alloys;
- Operating Temperature: min. -4 °C – max. 55 °C
min. 24.8° F – max. 130° F
- Device Weight: 23 kg (50 lbs);
- Mounts: - Handle Mount (2x handle & 1x connecting eye);
- Top-Eye (swivable);

Patents and standards:

European patent number: 002503698-001
 USA patent number: 23-0825-0576900
 European standards: EN 360:2002, EN 341:2011/1A
 US standard: ANSI / ASSE Z359.4-2007 pending;

Art.no: R013.025.100 – CWD20 SPEED (Handle Mount)
 Art.no: R013.025.000 – CWD20 SPEED (Top-Eye)



Accessories



**Universal mount
(wall, tree, pole)**
Auto Belay Anchor device

Art.no: R010.210.039
Univesel mount

Sidewinder Swivel Hook
Captive eye connector

Art.no: R024.001.035
Sidewinder Swivel Hook



Device Bracket
Auto Belay Mounting bracket

Art.no: R010.210.032
Device Bracket (Top-Eye)
Art.no: R010.210.033
Device Bracket (Handle Mount)

Belay Gate
Reinforce the proper use Auto Belay

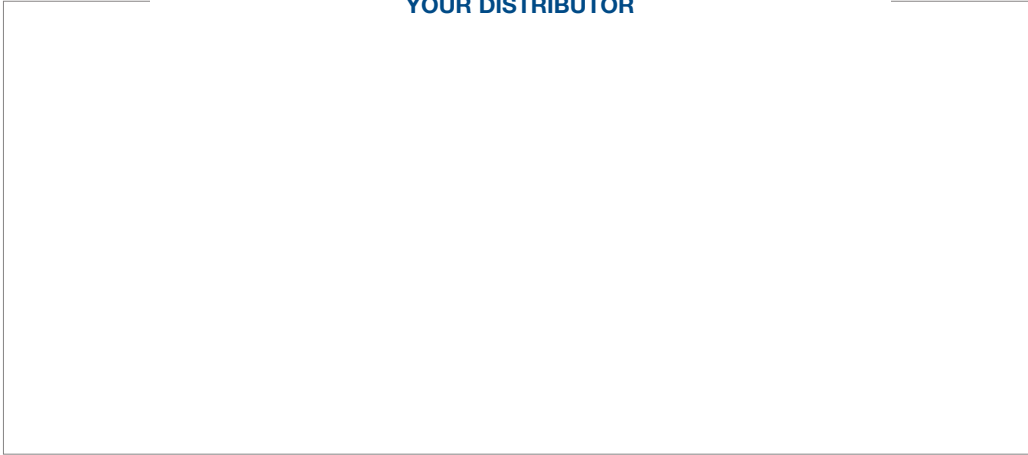
Art.no: R010.210.050
Belay Gate



Dimensions:
140 x 130 cm
(55.1 x 51.2 inch)



YOUR DISTRIBUTOR



MANUFACTURER



HONOR AdventureTech

Palmpolstraat 88, 1327 CJ Almere - The Netherlands
P.O.-Box 60105, 1320 AC Almere - The Netherlands

Tel. +31 (0)36 521 96 07
info@honor-adventuretech.com

www.honor-adventuretech.com



As we continually improve and update our product range, details of equipment described in this document may not be up to date. © Copyright HONOR AdventureTech

